



# GAT MONTHLY MEMBERSHIP PROGRESS REPORT

Results as of: 2/28/2023

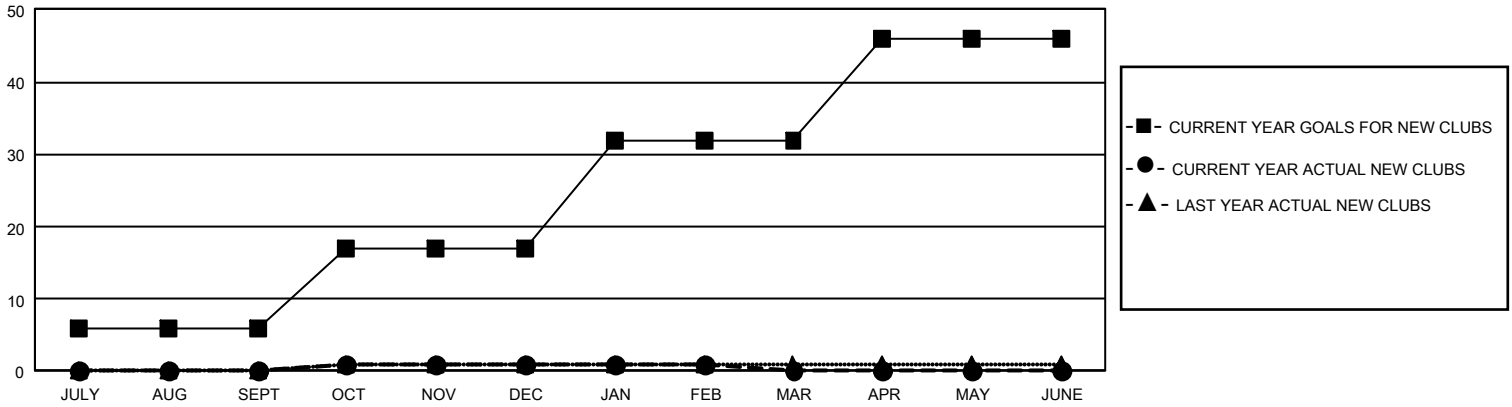
## GMT Constitutional Area 4, Group A

REPORT DOES NOT INCLUDE CLUBS IN UNDISTRICTED AREAS.

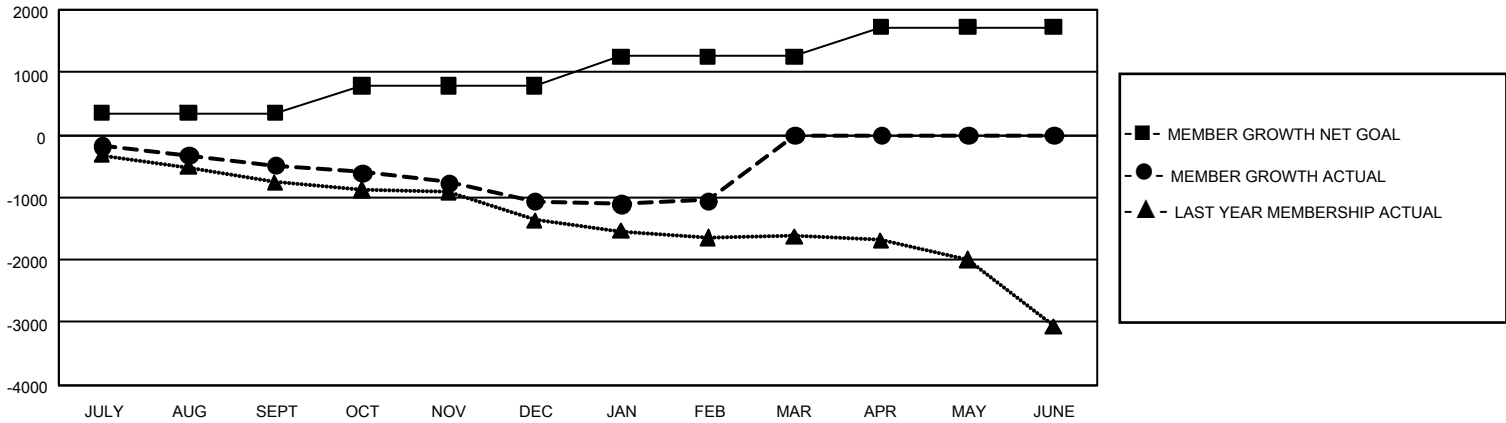
Clubs			
RESULTS FOR 2022-2023			
QUARTER	NEW CLUB GOAL	NEW CLUBS	DROPPED CLUBS
JULY/AUG/SEPT	18	0	24
OCT/NOV/DEC	33	1	16
JAN/FEB/MAR	45	0	8
APR/MAY/JUNE	42	0	0

Members			
RESULTS FOR 2022-2023			
QUARTER	MEMBER GROWTH NET GOAL	MEMBER GROWTH ACTUAL	DROPPED MEMBERS ACTUAL (including transfers)
JULY/AUG/SEPT	346	387	810
OCT/NOV/DEC	442	703	1,231
JAN/FEB/MAR	466	630	556
APR/MAY/JUNE	466	0	0

GOALS AND ACTUAL NEW CLUBS CUMULATIVE



GOALS AND ACTUAL MEMBERS CUMULATIVE



<b>DROPPED CLUBS: 48</b>	793 CLUBS OF 1,965 ADDED 1 OR MORE NEW MEMBERS	<b><u>GENDER DISTRIBUTION</u></b>	
		MALE 31,972 (76.91%) FEMALE 9,597 (23.09%) NON BINARY 0 (0.00%) PREFER NOT TO ANSWER 1 (0.00%)	
<b><u>DROPPED MEMBERS</u></b>		<a href="#">CLICK HERE FOR CUMULATIVE MEMBERSHIP DATA</a>	TOTAL FAMILY UNIT MEMBERS 1,571
DECEASED 355 CLUB CANCELLED 171 OTHER 2,071 <b>TOTAL 2,597</b>			FAMILY MEMBERS PAYING HALF DUES 780